



## The DfE guidance for RSE in secondary schools states that

- Relationships and Sex Education (RSE) should ensure that grooming, sexual exploitation and domestic abuse, including coercive and controlling behaviour, should be addressed sensitively and clearly.
- Pupils should know how sexual consent, sexual exploitation, grooming and coercion can affect current and future relationships.
- Pupils should be made aware of the relevant legal position on sexual exploitation, violence and exploitation by gangs, extremism/radicalization and criminal exploitation including 'county lines'.

*"Clearly a well-researched and targeted production, with clear evidence that the programme works."* - **Home Office**

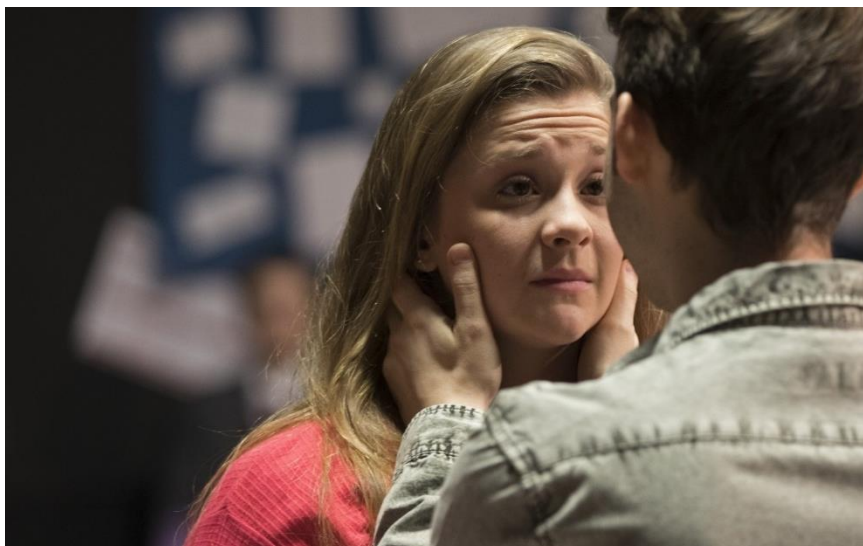
## Concept

### **Powerful theatre in education programme on child exploitation.**

*"The performance was outstanding and had a huge impact on staff and students. The workshops were well-managed and facilitated to a high standard.*

**"Head of Year"**

This programme teaches about a wide range of child exploitation issues including child sexual exploitation, exploitation into crime e.g. county lines and knife crime.





## Objective

### **Safe and sensitively run drama and workshop.**

The programme uses well researched drama plus discussion workshop to help young people spot the signs of grooming, raise empathy for victims and see the impact of child exploitation. It highlights how perpetrators target young people's vulnerabilities, how victims and perpetrators can be anyone e.g. gender, ethnicity, age and the laws around coercive and controlling behaviour.

## Outcomes

### **Proven increase of young people's confidence and skills on topic of child exploitation.**



- 86% of learners said that the session had made them think differently about issues around child sexual exploitation.
- 94% said that as a result of participating in Working for Marcus they felt 'confident' or 'very confident' in spotting signs of child exploitation or grooming.
- 65% said they would now make changes to their life as a result of taking part in the programme.
- 100% of staff would recommend the programme to other schools.

**To find out how young people in your school could benefit from this programme contact Loudmouth Education and Training on 0121 446 4880 or e mail [info@loudmouth.co.uk](mailto:info@loudmouth.co.uk)**